



SOFTWARE CONTROL SERVICES (PTY) LTD

475 King's Highway, Lynnwood  
P.O.Box 36675, Menlo Park  
Pretoria, South Africa  
0102

(t) +27 12 348 7301  
(f) +27 12 348 1129  
(e) techsupport@softconserv.com  
www.softconserv.com

# Set-up of ZK Biometric Reader in Softwin3 Software.

Version 0. 1

Prepared by: Shaun Laas

Softcon Software Control Services (Pty) Ltd.

7 March 2017



# Revision History

Name	Date	Reason For Changes	Version
SL	26-Jan-2016	Initial document	0.1
SL	26-Jan-2016	Cover Page	0.2

## Contents

1. Information
2. Instructions
3. Wiring Diagram
4. Specifications

## Information

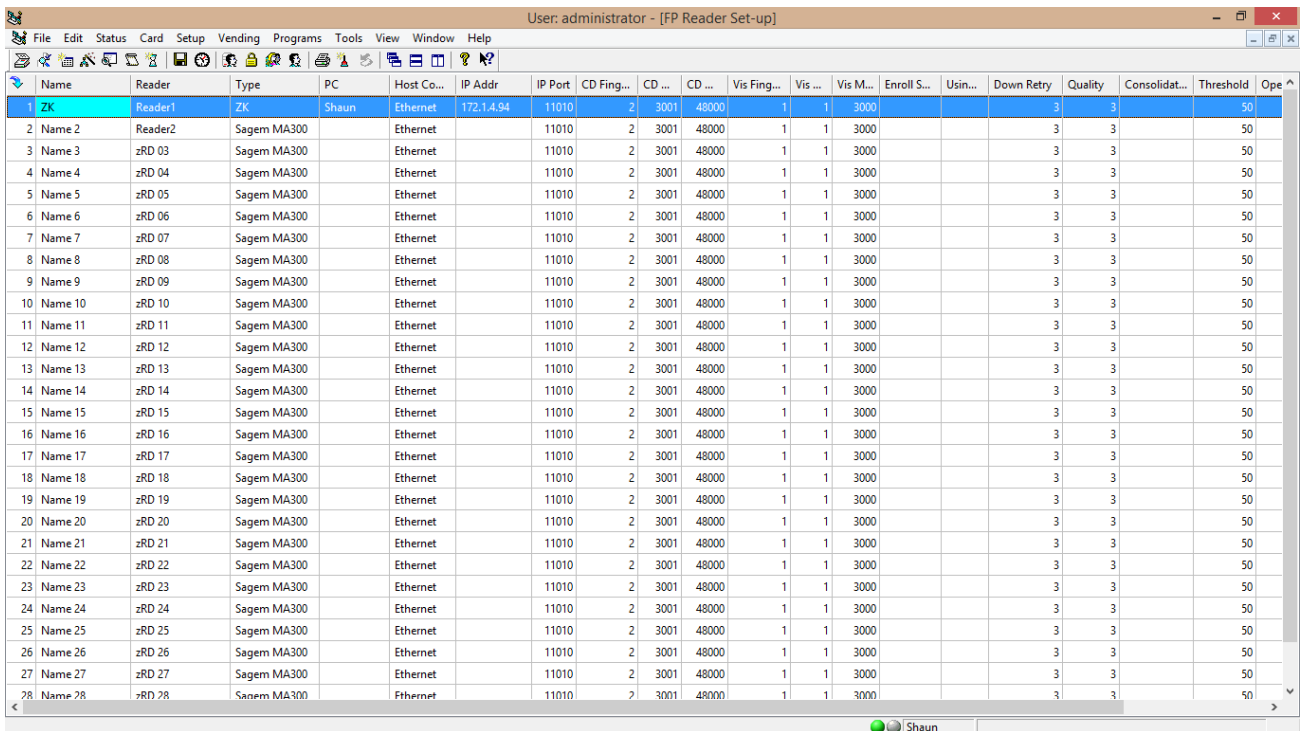
In this document we will show you how to set-up the ZK biometric reader in Softwin3.

**Please note that ZK and Sagem readers can not be used on the same system.**

## Instructions:

### Step1:

Click on Setup → Click on Setup editor → Click on Fp Reader Setup.

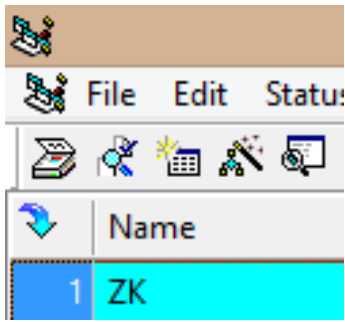


The screenshot shows a software window titled 'User: administrator - [FP Reader Set-up]'. The window contains a menu bar (File, Edit, Status, Card, Setup, Vending, Programs, Tools, View, Window, Help) and a toolbar. Below the toolbar is a table with the following columns: Name, Reader, Type, PC, Host Co..., IP Addr, IP Port, CD Fing..., CD ..., CD ..., Vis Fing..., Vis ..., Vis M..., Enroll S..., Usin..., Down Retry, Quality, Consolidat..., Threshold, and Ope ^.

Name	Reader	Type	PC	Host Co...	IP Addr	IP Port	CD Fing...	CD ...	CD ...	Vis Fing...	Vis ...	Vis M...	Enroll S...	Usin...	Down Retry	Quality	Consolidat...	Threshold	Ope ^
1 ZK	Reader1	ZK	Shaun	Ethernet	172.1.4.94	11010	2	3001	48000	1	1	3000			3	3		50	
2 Name 2	Reader2	Sagem MA300		Ethernet		11010	2	3001	48000	1	1	3000			3	3		50	
3 Name 3	zRD 03	Sagem MA300		Ethernet		11010	2	3001	48000	1	1	3000			3	3		50	
4 Name 4	zRD 04	Sagem MA300		Ethernet		11010	2	3001	48000	1	1	3000			3	3		50	
5 Name 5	zRD 05	Sagem MA300		Ethernet		11010	2	3001	48000	1	1	3000			3	3		50	
6 Name 6	zRD 06	Sagem MA300		Ethernet		11010	2	3001	48000	1	1	3000			3	3		50	
7 Name 7	zRD 07	Sagem MA300		Ethernet		11010	2	3001	48000	1	1	3000			3	3		50	
8 Name 8	zRD 08	Sagem MA300		Ethernet		11010	2	3001	48000	1	1	3000			3	3		50	
9 Name 9	zRD 09	Sagem MA300		Ethernet		11010	2	3001	48000	1	1	3000			3	3		50	
10 Name 10	zRD 10	Sagem MA300		Ethernet		11010	2	3001	48000	1	1	3000			3	3		50	
11 Name 11	zRD 11	Sagem MA300		Ethernet		11010	2	3001	48000	1	1	3000			3	3		50	
12 Name 12	zRD 12	Sagem MA300		Ethernet		11010	2	3001	48000	1	1	3000			3	3		50	
13 Name 13	zRD 13	Sagem MA300		Ethernet		11010	2	3001	48000	1	1	3000			3	3		50	
14 Name 14	zRD 14	Sagem MA300		Ethernet		11010	2	3001	48000	1	1	3000			3	3		50	
15 Name 15	zRD 15	Sagem MA300		Ethernet		11010	2	3001	48000	1	1	3000			3	3		50	
16 Name 16	zRD 16	Sagem MA300		Ethernet		11010	2	3001	48000	1	1	3000			3	3		50	
17 Name 17	zRD 17	Sagem MA300		Ethernet		11010	2	3001	48000	1	1	3000			3	3		50	
18 Name 18	zRD 18	Sagem MA300		Ethernet		11010	2	3001	48000	1	1	3000			3	3		50	
19 Name 19	zRD 19	Sagem MA300		Ethernet		11010	2	3001	48000	1	1	3000			3	3		50	
20 Name 20	zRD 20	Sagem MA300		Ethernet		11010	2	3001	48000	1	1	3000			3	3		50	
21 Name 21	zRD 21	Sagem MA300		Ethernet		11010	2	3001	48000	1	1	3000			3	3		50	
22 Name 22	zRD 22	Sagem MA300		Ethernet		11010	2	3001	48000	1	1	3000			3	3		50	
23 Name 23	zRD 23	Sagem MA300		Ethernet		11010	2	3001	48000	1	1	3000			3	3		50	
24 Name 24	zRD 24	Sagem MA300		Ethernet		11010	2	3001	48000	1	1	3000			3	3		50	
25 Name 25	zRD 25	Sagem MA300		Ethernet		11010	2	3001	48000	1	1	3000			3	3		50	
26 Name 26	zRD 26	Sagem MA300		Ethernet		11010	2	3001	48000	1	1	3000			3	3		50	
27 Name 27	zRD 27	Sagem MA300		Ethernet		11010	2	3001	48000	1	1	3000			3	3		50	
28 Name 28	zRD 28	Sagem MA300		Ethernet		11010	2	3001	48000	1	1	3000			3	3		50	

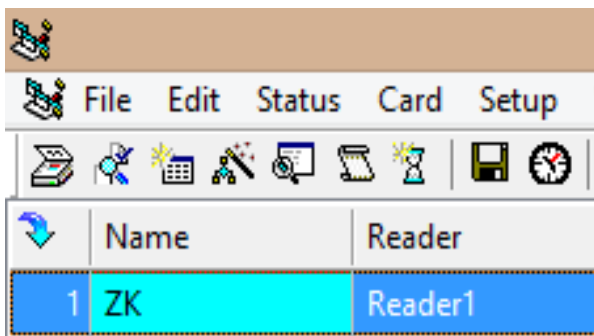
### Step 2:

Specify a name for the ZK reader.



### **Step 3:**

At the Reader column, specify the reader to use that has been previously configured.



### **Step 4:**

At the Type column, open the drop-down menu and select the ZK as the type.

Name	Reader	Type	PC
1 ZK	Reader1	ZK	un
2 Name 2	Reader2	None	
3 Name 3	zRD 03	Sagem MA100	
4 Name 4	zRD 04	Sagem MA200	
5 Name 5	zRD 05	Sagem MA300	
6 Name 6	zRD 06	Sagem MA500	
7 Name 7	zRD 07	Sagem MA-J	
		Sagem Morphosmart	
		ZK	
		ZK Enroll	

**Step 5:**

At the Pc column, select the pc where the ZK reader is connected to.

Name	Reader	Type	PC
1 ZK	Reader1	ZK	Shaun

**Step 6:**

At the IP column, specify the IP address of the ZK reader.

						User:
File Edit Status Card Setup Vending Programs Tools View Window Help						
	Name	Reader	Type	PC	Host Comm	IP Addr
1	ZK	Reader1	ZK	Shaun	Ethernet	172.1.4.94

**Step 7:**

Adjust the port number to 4370. It is the standard port number for the ZK readers.

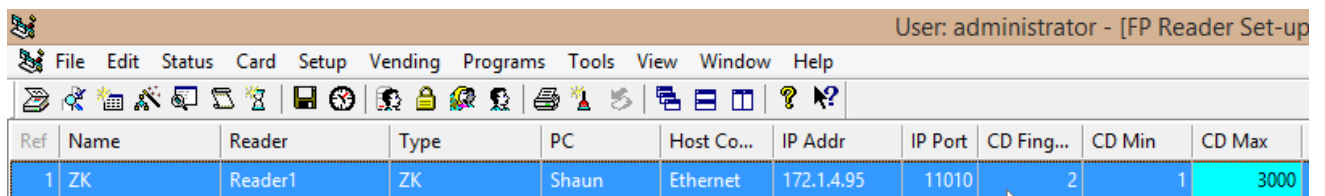
							User: adm
File Edit Status Card Setup Vending Programs Tools View Window Help							
Ref	Name	Reader	Type	PC	Host Co...	IP Addr	IP Port
1	ZK	Reader 1	ZK	Shaun	Ethernet	172.1.4.96	370

**Step 8:**

At CD Min & CD Max, specify the following values:

CD Min = 1

CD Max = 3000

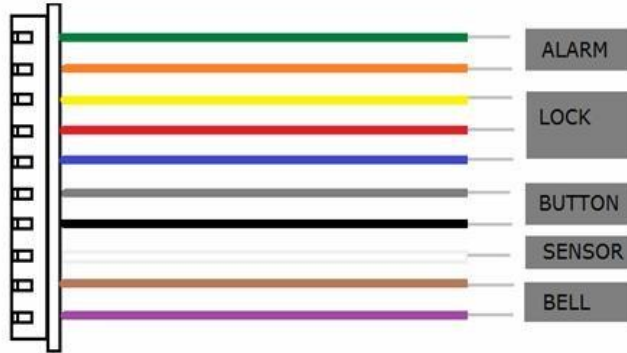


The screenshot shows a software window titled "User: administrator - [FP Reader Set-up]". The window has a menu bar with "File", "Edit", "Status", "Card", "Setup", "Vending", "Programs", "Tools", "View", "Window", and "Help". Below the menu bar is a toolbar with various icons. The main area contains a table with the following data:

Ref	Name	Reader	Type	PC	Host Co...	IP Addr	IP Port	CD Fing...	CD Min	CD Max
1	ZK	Reader1	ZK	Shaun	Ethernet	172.1.4.95	11010	2	1	3000

**Wiring diagram:**

PIN	PIN DESCRIPTION	WIRE
1	Alarm -	GREEN
2	Alarm +	ORANGE
3	NC	YELLOW
4	COM	RED
5	NO	BLUE
6	Button	GRAY
7	GND	BLACK
8	Sensor	WHITE
9	Bell+	BROWN
10	Bell-	PURPLE



PIN	PIN DESCRIPTION	WIRE
1	WD0	GREEN
2	WD1	WHITE
3	GND	BLACK
4	232 RX	GRAY
5	232 TX	PURPLE
6	GND	BLACK
7	485 A	BLUE
8	485 B	YELLOW



PIN	PIN DESCRIPTION	WIRE
1	BEEP	PURPLE
2	GLED	GRAY
3	RLED	BLUE
4	INWD0	GREEN
5	INWD1	WHITE
6	GND	BLACK
7	+12V	RED



PIN	PIN DESCRIPTION	WIRE
1	RJ45-1	YELLOW
2	RJ45-2	GREEN
3	RJ45-3	RED
4	RJ45-6	BLACK



PIN	PIN DESCRIPTION	WIRE
1	+12V DC	RED
2	GND	BLACK



### Important Notes

- \* Do not place the F18 under strong light.
- \* Use regulated 12V DC 3A power source (supplied from control panel or separately purchased power supply).
- \* Do not place the F18 in a vulnerable location where it might be subjected to vandalism.



**Specifications:**

Fingerprint capacity	3,000
Transaction capacity	100,000
Hardware Platform	ZEM720
CPU	ZK 6001, 400Mhz
Memory	64M Flash, 32MSDRAM
Fingerprint Sensor	ZK optical sensor
Display	2.4" TFT LCD color screen
LED Indicator	Red, Green
Communication	Ethernet (10/100M) , RS485, USB-HOST,
Wiegand signal	Wiegand Input and Wiegand Output
Identification speed	≤2 sec
FAR	≤0.0001%
FRR	≤1%
Operating Temperature	0-45℃
Operating Humidity	20%-80%
Language	English, Spanish, Portuguese, French...
Power Supply	12V DC, 3A
Access control interfaces	Electric lock, alarm, exit button, wired door bell
Dimension	80*183*42mm (L*W*D)

**Front**



## Side



