



SOFTWARE CONTROL SERVICES (PTY) LTD

475 King's Highway, Lynnwood
P.O.Box 36675, Menlo Park
Pretoria, South Africa
0102

(t) +27 12 348 7301
(f) +27 12 348 1129
(e) techsupport@softconserv.com
www.softconserv.com

Open too long on Controller.

Version 0. 1

Prepared by: Tihan Du Plooy

Softcon Software Control Services (Pty) Ltd.

7 March 2017



Revision History

Name	Date	Reason For Changes	Version
MDH	19-Sep-2014	Initial document	0.1
MDH	14-Jul-10	Cover Page	0.2

Contents

1. Information	2
2. Open too long	3 - 4

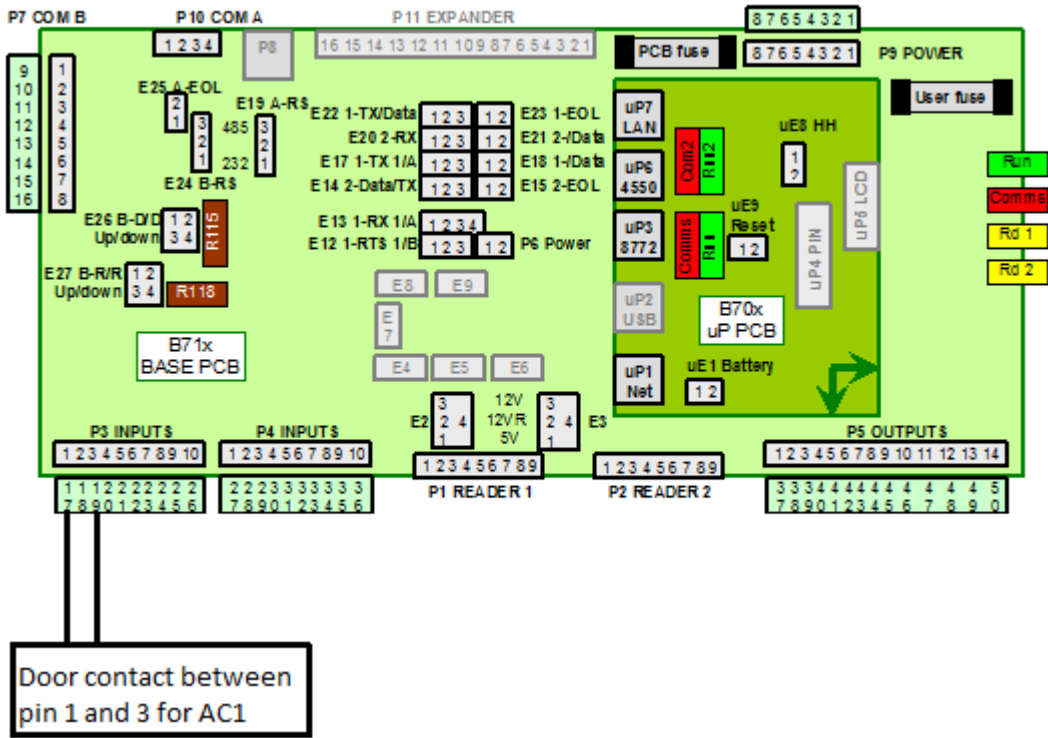
Information

Open too long gives an indication that the door is opened but not closed.

Wiring Diagram on the Controller

CR390 CONNECTIONS

Revision 01.02



Open too long setup

To setup open too long follow the following steps shown below.

1. In Softwin3 Software click on **Setup** and then on **Setup Editor and the CR351-5 set-up**. See Figure 1 and Figure 2.

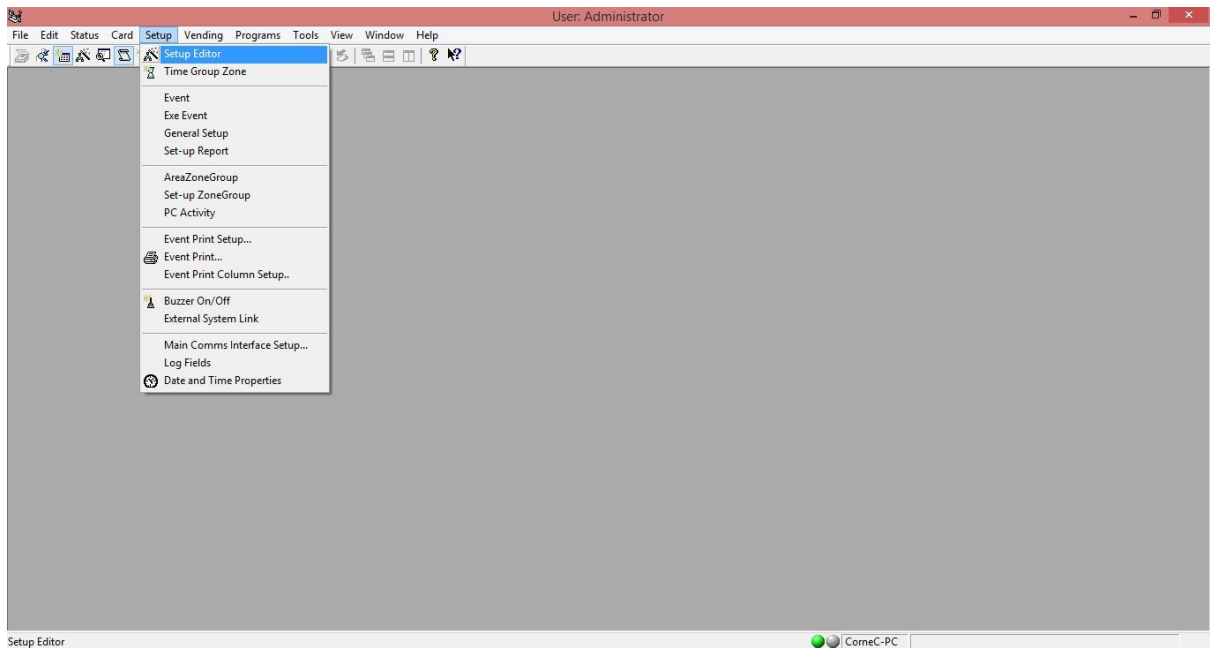


Figure 1

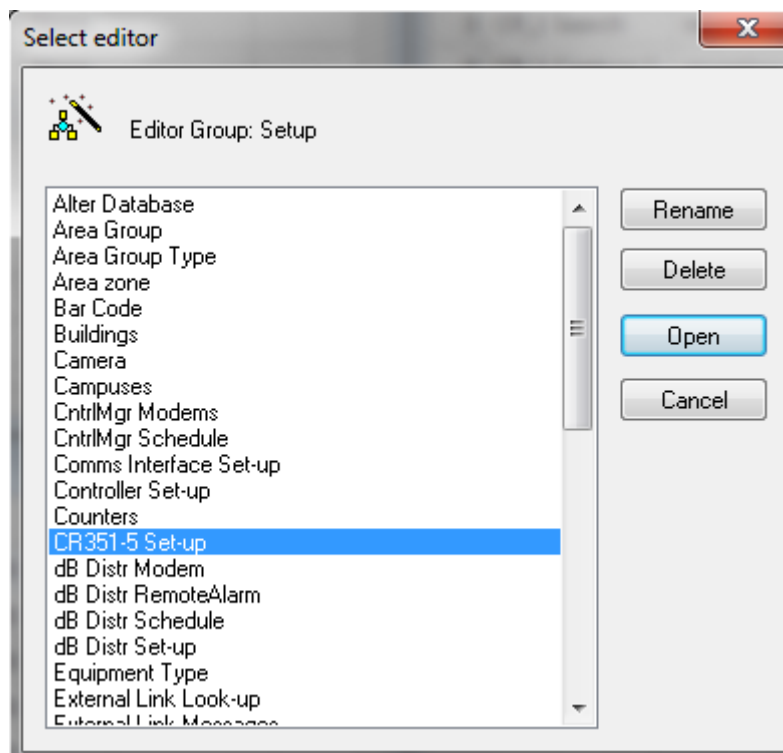


Figure 2

- In the CR-351-5 setup you insert Normally closed underneath the heading Monitor. Then in the heading Too Long, you insert the amount of time the door can stay open before a buzzer go off. See Figure 3.

	Controller	Do...	Latch s...	Latch 1	Latch 2	Monitor	Too long	R1 Capt...	R2 Capt...	Booth	Front module ...	Front module...
1	reception	Two	5	Normal closed	Normal closed	Normal closed	2	None	None	None	No	No
2	manager sales	Two	1	Normal open	Normal open	None	0	None	None	None	No	No
3	main mux	Two	5	Normal closed	Normal closed	None	0	None	None	None	No	No
4	it	Two	5	Normal closed	Normal closed	None	0	None	None	None	No	No

Figure 3