



SOFTWARE CONTROL SERVICES (PTY) LTD

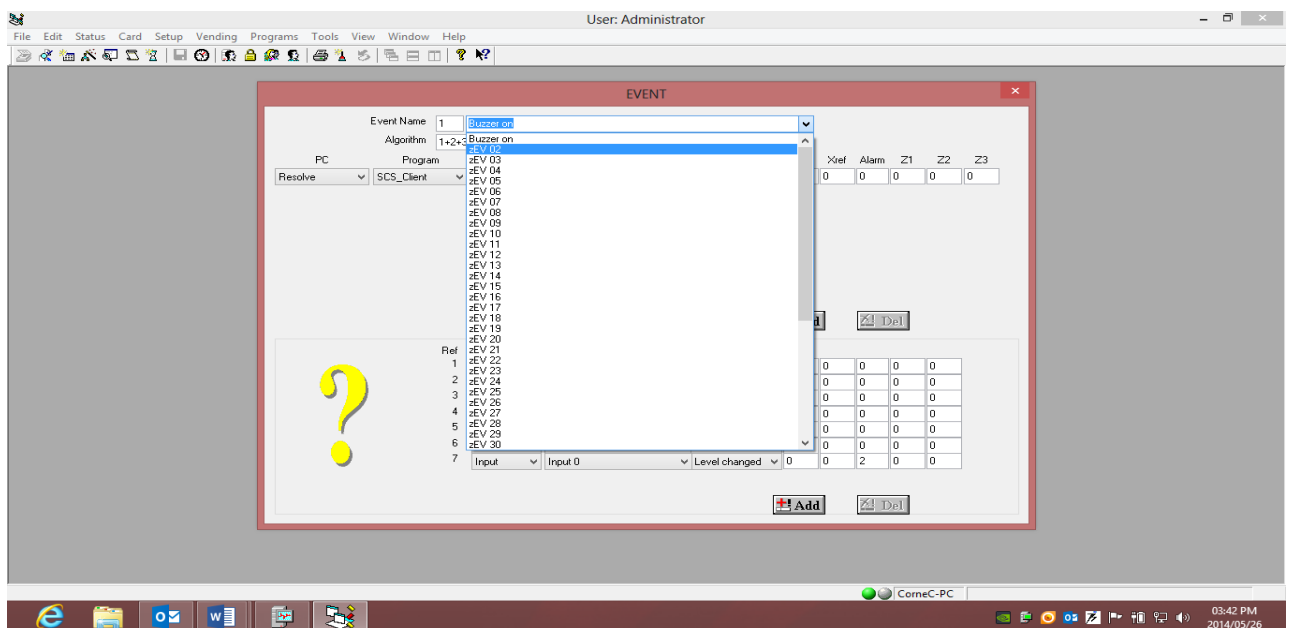
475 King's Highway, Lynnwood  
P.O.Box 36675, Menlo Park  
Pretoria, South Africa  
0102

(t) +27 12 348 7301  
(f) +27 12 348 1129  
(e) techsupport@softconserv.com  
www.softconserv.com

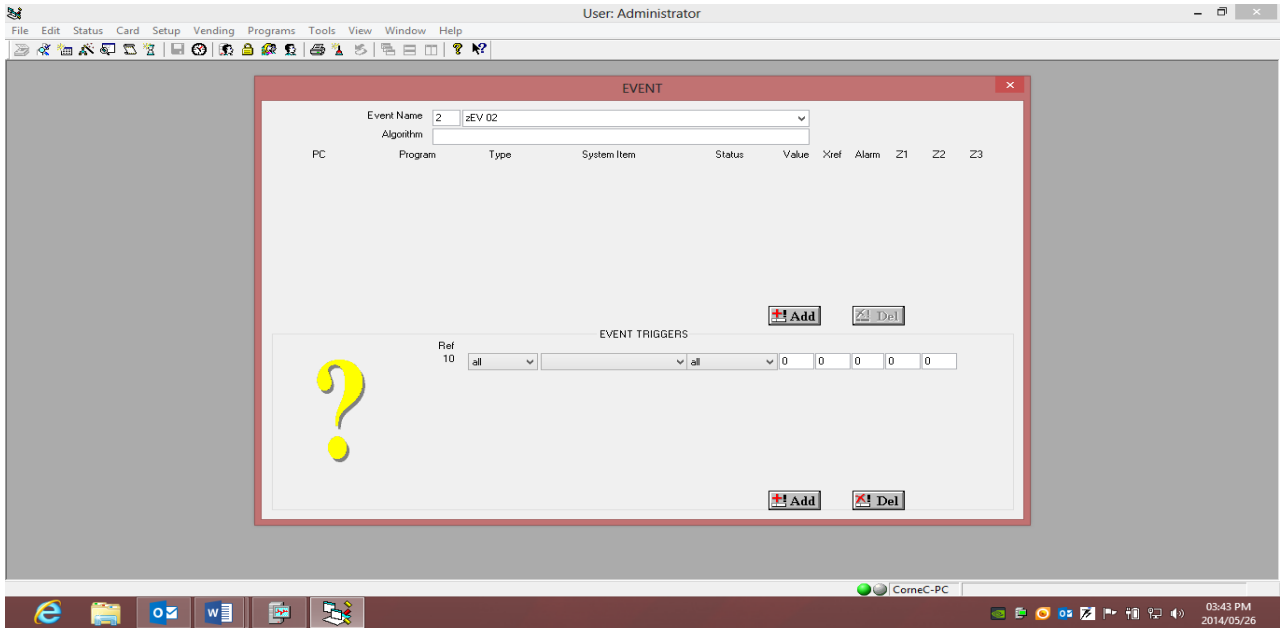
## How to create an auto FP Add Record on Softwin3.

Follow the following steps to create an event to auto download finger print records to Sagem readers when user is enrolling new finger prints.

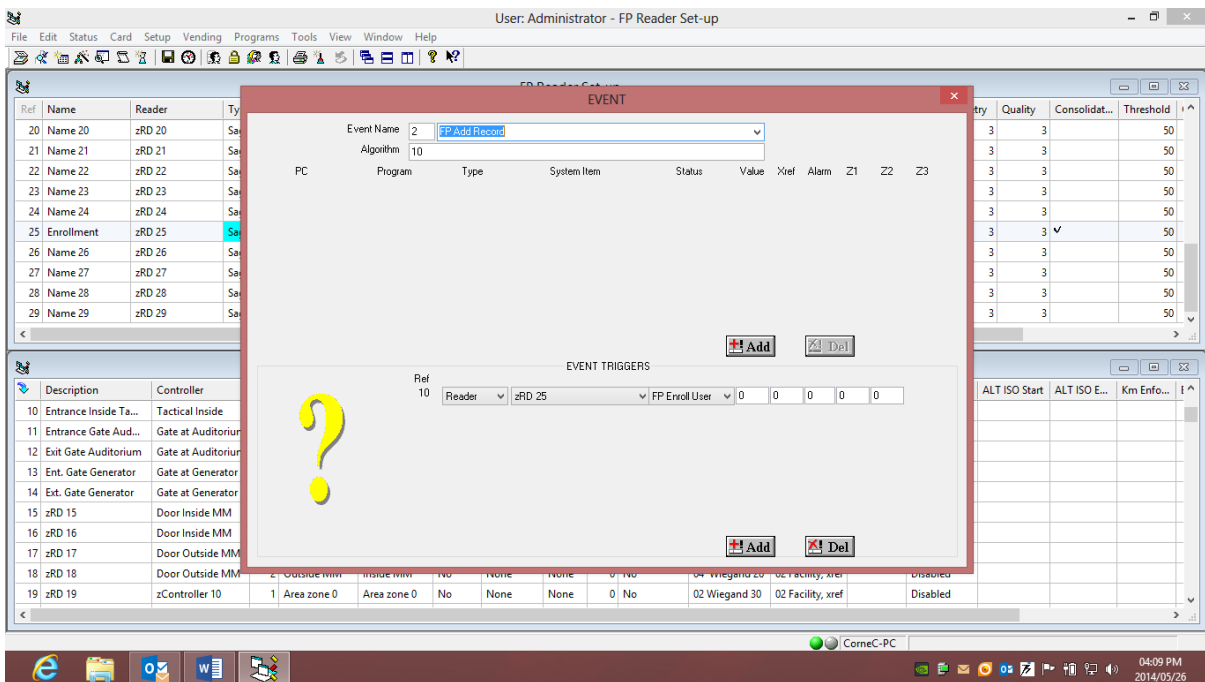
1. In Softwin3 click on "Setup" and then on "Events".



2. Click on the dropdown bar and select "zEV 02". Rename "zEV 02" to FP\_Auto\_Enroll. Or anything that you will recognise. In the Algorithm box type in the Ref number of EVENT TRIGGERS.
3. In "EVENT TRIGGERS" click on "ADD"



4. In the first dropdown bar select "reader". In the second dropdown bar select the enrolment units "zRD" number. You can find the number under "FP Reader Setup". In the third dropdown bar select "FP Enroll User".



5. In the top half of the event click on "ADD". Change the following dropdowns.
  - PC must be Resolve
  - Program must be SCS\_Client
  - Type must be Reader
  - System Item changed to the FP Reader that you are using.
  - Status must be FP Add Record

- Xref must be (~\_ where (\_) is the number of your Ref is in the bottom of the Event Triggers).

Repeat all the steps in no 5 for each finger print reader you have on site.

