



SOFTWARE CONTROL SERVICES (PTY) LTD

475 King's Highway, Lynnwood
P.O.Box 36675, Menlo Park
Pretoria, South Africa
0102

(t) +27 12 348 7301
(f) +27 12 348 1129
(e) techsupport@softconserv.com
www.softconserv.com

Audit Running on Server.

Version 0. 1

Prepared by: Tihan Du Plooy

Softcon Software Control Services (Pty) Ltd.

7 March 2017

Revision History

Name	Date	Reason For Changes	Version
MDH	19-Sep-2014	Initial document	0.1
MDH	14-Jul-10	Cover Page	0.2

Contents

1. Information	2
2. Audit running on Server.....	3 - 4

Information

The Audit function on the server is so that you can pull an Audit report for instance to have a look at who logged onto the SCS_Report.

Audit running on Server

To know if Audit is running on the server:

1. On the Softcon Server Manager (see Figure 1) it must tell you softcon server running (audit). When this information is correct there must be an AUDIT folder in the softwin3 folder. Pull a report Audit – Cards (report reference 181), or report Audit - Disabled by Operator (report reference 185).

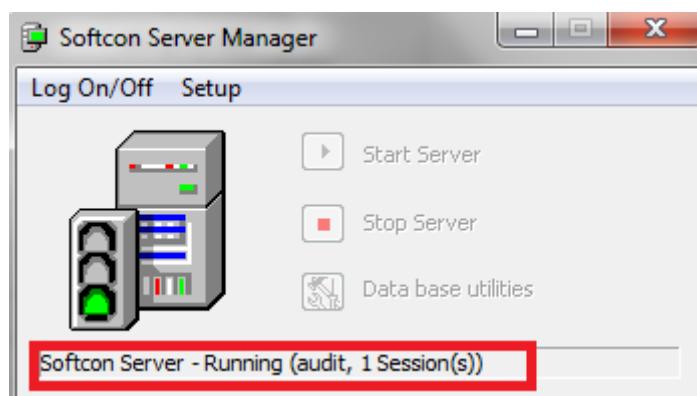


Figure 1

2. If the Softcon Server Manager doesn't show the Audit running then click on start, all programs and then softwin3. Right click on SCS_Start and click on properties. Fill in the details (see figure 2 and 3).

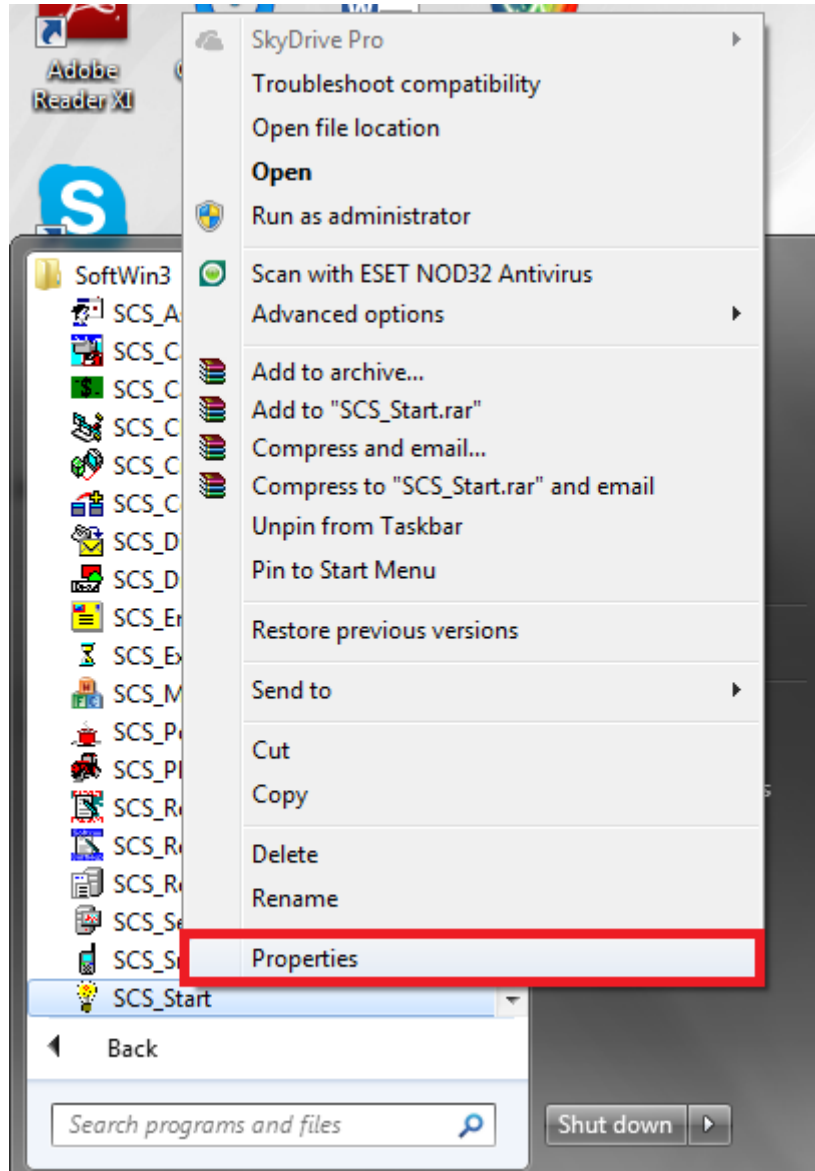


Figure 2

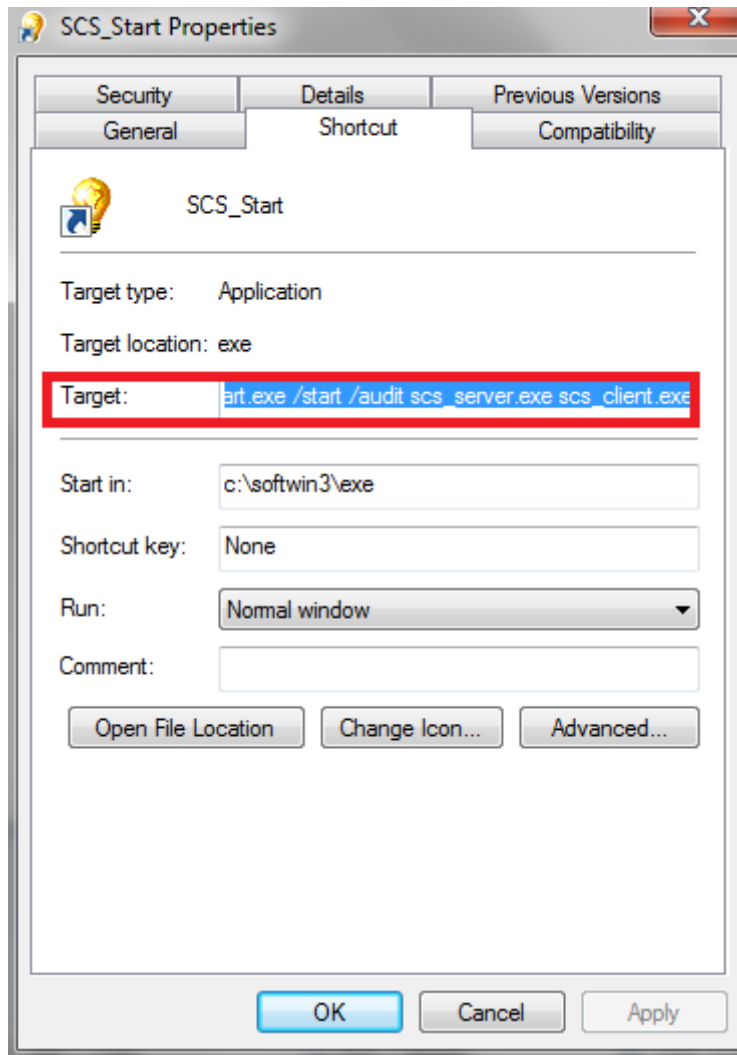


Figure 3