



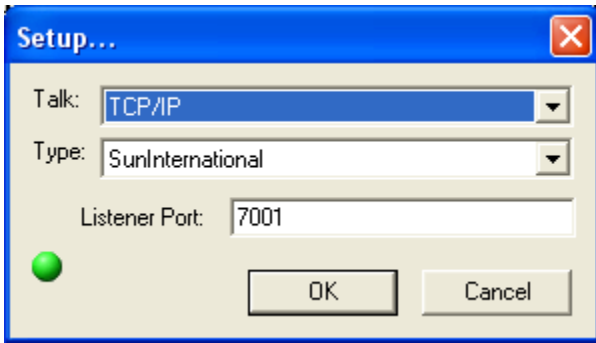
SCS_ExtTest

- Install SoftWin3 on PC.
- Run SCS_Server.exe. User is administrator. Password is Admin.
- Run SCS_Client. Set the PC network name, or enter localhost.
 - Set Demo Version in Test options in Tools menu.
 - Enter key obtained from Softcon
 - Set External System Link in Setup menu as follows:

A screenshot of the "External System Link" dialog box. The dialog has two tabs: "External System" (selected) and "External File". Under "External System", there are four checkboxes: "Vending" (unchecked), "Cards" (checked), "External Vend Item" (unchecked), and "Use Card Number" (unchecked). Below these are two text boxes for "Card1 Mask" and "Card2 Mask", both containing the placeholder "{F_CD_NUM}". There are two dropdown menus: "Talk" set to "TCP" and "Type" set to "S.I.". Below these are text boxes for "TCP/IP Host" (containing "MarkL") and "TCP/IP Port" (containing "7001"). At the bottom left is a green status indicator. Further down are text boxes for "Repeat Count" (1), "Delay" (50), "Routing", and "Terminal". At the bottom are "OK", "Cancel", and "Apply" buttons.

Where TCP/IP Host the network name of the PC running SCS_Client.

Run SCS_ExtTest.exe and set setup in Tools menu as follows:

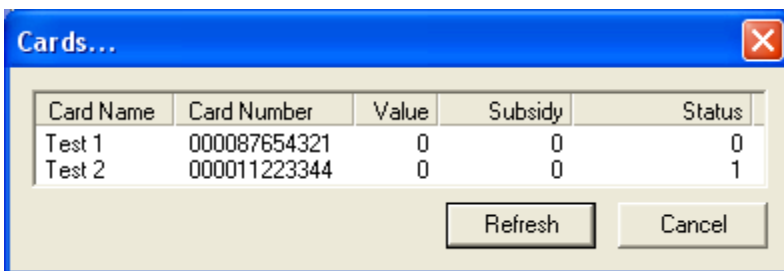


The connection icons on the two menus should be green if connection is successful. If not, set type to none and back to S.I. The SCS_External Test display should display:

<< CONNECT from the client: 127.0.0.1!!!

Where the IP address of the PC is shown (e.g. 127.0.0.1)


In SCS_ExtTest, add cards in the tools, cards menu by right clicking in the window. Add cards 000087654321m not enabled and card 000011223344 enabled as shown:



In SCS_Client Tools menu, select Open Mux In simulator and select c:\softwin3\test\MVG.smi (or open New Mux In Simulator), containing the following data (see Softcon help files if own simulators are required):



A line contains an event of a card being entered: Mux number 001, controller number 01 (to which reader is connected), length of message (0C hex is 12 bytes), message type (60 is reader 1 requested, 61 is reader 2 requested), @D inserts the PC date, @h the hour, @m the minute, @s the second, 00 reference not used, card number (of 8 digits in BCD), 2 bytes not used.

With the cursor on any line, select the Run Line icon  in the simulate bar, or select run line in the Tools menu or select key F8. Messages are displayed in SCS_ExtTest, depending on data found.

```

<< SOS00[000012345678|1|20030701011209]*1|000012345678
>> SOR0001[000012345678|Not Found]*1|000012345678
<< SOS00[000012345678|1|20030701011209]*1|000012345678
>> SOR0001[000012345678|Not Found]*1|000012345678
<< SOS00[000012345678|1|20030701011209]*1|000012345678
>> SOR0001[000012345678|Not Found]*1|000012345678
  
```