

# SCS\_ConvertZone

**HELP VERSION - 01.03 08/03/2017**

This help files serves as the help manual to the SoftWin version 3 zone convert program and can be access via the program by selecting help.

## Index:

[AIM](#)

[GENERAL](#)

[START-Up](#)

[CLOSING](#)

[SECURITY KEYS](#)

[DATA](#)

[Card list](#)

[Set-up](#)

[MENU](#)

[File](#)

[New](#)

[Open](#)

[Recent File](#)

[Exit](#)

[View](#)

[Tools](#)

[Start](#)

[Stop](#)

[Log Off](#)

[Menu Access](#)

[Converter types](#)

[Converters](#)

[Compact databases](#)

[New references](#)

[Help](#)

[Help Topic](#)

[About](#)

# AIM

The aim and goal of this document is to serve as a general help manual for the Softcon program SCS\_ConvertZone.exe zone converter. All functions are listed in this document.

General development info about the program SCS\_ConvZone is:

**Program language:** C++, IDL (Interface Definition Language).  
**Technology:** MFC, Multithreading, DAO, COM and RPC.  
**Program architecture:** Multiple document templates.  
**Program development:** MS Visual C++ 6.0.

## 1 GENERAL

SCS\_ConvertZone.exe is a utility program that:

- Set cards access area group.
- Set cards asset group.
- Adds / deletes cards multi-access area groups.
- Adds / deletes area zones to / from cards area group.

The cards that are to be changed are listed in a text file, the area groups / zones, the asset groups / items and the function to be performed are set via the program and are stored in a database file. The convert **functions** that can be performed are:

**Add** For zone / item selections, the area zones / asset items are added to the listed cards own area / asset group.  
For multi-group selection, the groups are added to the cards multi-group.  
For access / asset group selections, the cards group are changed.

**Delete** As for add, only deleted. For access / asset group selections, the cards group are set to zero.

**Strictly** This option is only for area zones and asset items. The area zones / asset items are deleted from all area / asset groups and added to the listed cards own area / asset groups, i.e. only the listed cards have access to the area zones / asset items.

**Only** This option is only for area zones and asset items. All area zones / asset items are deleted from the listed cards own area / asset group and added the area zones / asset items added to the listed cards own area / asset group, i.e. the listed cards only have access to the area zones / asset items.

Cards that have changed area zones, are updated to the affected controllers only.

## 2 START-UP

The Softcon program SCS\_Server.exe need not be running before the client program is started.

When SCS\_ConvertZone starts running the following occurs:

- If SCS\_Server is running, a message is sent to SCS\_Server to stop accessing the data table AREA\_ZG.
- Converts and updates AREA\_ZG.
- Compresses the table AREA\_ZG, if not open by another program.
- If SCS\_Server is running, a message is sent to SCS\_Server to start accessing the data table AREA\_ZG.

## 3 CLOSING

The program terminates and closes all links to databases.

## 4 SECURITY

As the convert program is purchased as an optional extra, it is protected by security keys. The **Translator AZG** option must set to Yes for the program to function (From SCS\_Client.exe see menu "Setup"->"Main Mux Setup...", option "Translator AZG" must be "Yes").

# 5 DATA

## 5.1 Card list

The cards that have area zones added or deleted are listed in a flat ASCII text file, in a line for each card. The line contains the card reference for a card and can be any of the unique data fields in the card database, typically the reference number, the card number or the employee number. The field to be used for the field is contained in the set-up database and is edit via the converter menu.

The file name and location are set in the set-up database.

## 5.2 Set-up

The table CONV\_ZONE in the database AREA.MDB contains the set-up data, with a record for each converter. The fields are:

- Reference:** Type Number, primary key.
- Name:** Type Text 50. A description given to the converter (e.g. "Parking for MSc students").
- Function:** Type Number. A reference to the [convert function](#) – reference to CONV\_TYPE.REFERENCE.
- File:** Type Text 100. The path and file name of the text file containing the cards to be updated (e.g. "C:\softwin3\convert\Park\_MSc.txt").
- CardRef:** Type Text 30. Card table reference field name that is used to find the card (e.g. F\_CD\_EMPLOY).
- Run:** Type Y/N. Set to -1 when yes, runs the converter task when start is selected in the tools menu.
- Audit:** Type Y/N. Set to -1 when yes, logs changes made when the converter run to the daily audit log file.
- Zones:** Type OLE object encrypted. Contains the list of area zones / asset items / area groups / asset group (with the time-group and time-out in the area zone for zone selections) that are added to or deleted from the cards. Fields are comma separated, with the format:  
area zone=time-group.time-out  
e.g. 1=5.0,3=2.10,5=1.6  
Area zone 1 with time-group 5, zero time-out.  
Area zone 3 with time-group 2, 10 minute time-out.  
Area zone 5 with time-group 1, 6 minute time-out.

The table CONV\_TYPE in the database AREA.MDB contains the convert functions that can be selected. The fields are:

REFERENCE	NAME
1	Area Zone Add
2	Area Zone Delete
3	Area Zone Only
4	Area Zone Strictly
5	Multi-Area Group Add
6	Multi-Area Group Delete
7	Area Group Set Card
8	Asset Group Set Card

- Reference:** Type Number, primary key.
- Name:** Type Text 30. Description given to the function. The records are set as displayed.

# MENU

## 5.3 FILE

**New** (Ctrl+N) and **Open** (Ctrl+O) allow the editing of new and existing text files.

**Print Set-up** allows the set-up of Windows printers.

**Recent file** provides a list of the recent edited file. Selecting a file opens the file for editing.

**Exit** Closes the program.

## 5.4 VIEW

The **Toolbar** containing hot key icons is displayed when the option is checked. The toolbar can be selected and dragged to where required on display.

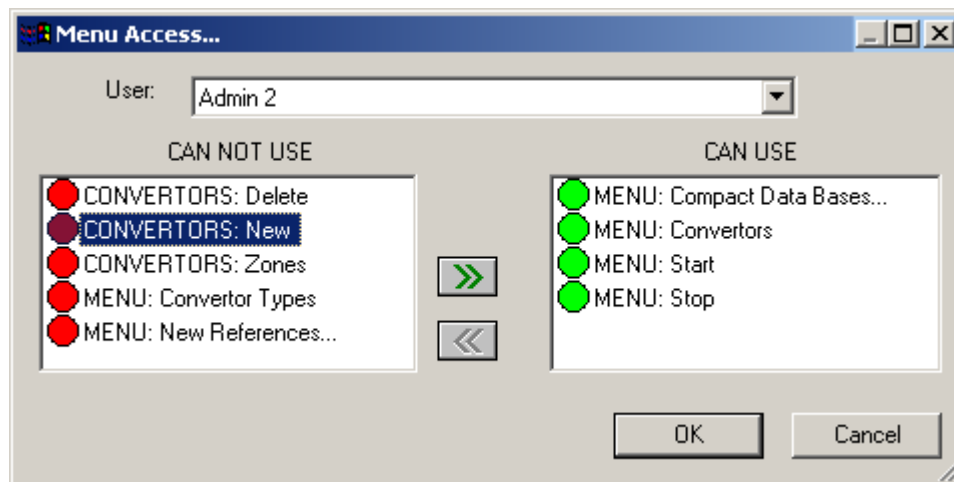
When the option is checked, a **Status bar** at the bottom of the window displays messages and options as the mouse is moved.

## 5.5 TOOLS

**Start** starts conversions of all converters checked in the converters list and selection of **Stop** ends the conversions in process.

**Log Off** changes the logged on user. Deleting and adding new users and user groups and the changing of passwords is done in SCS\_Client.exe.

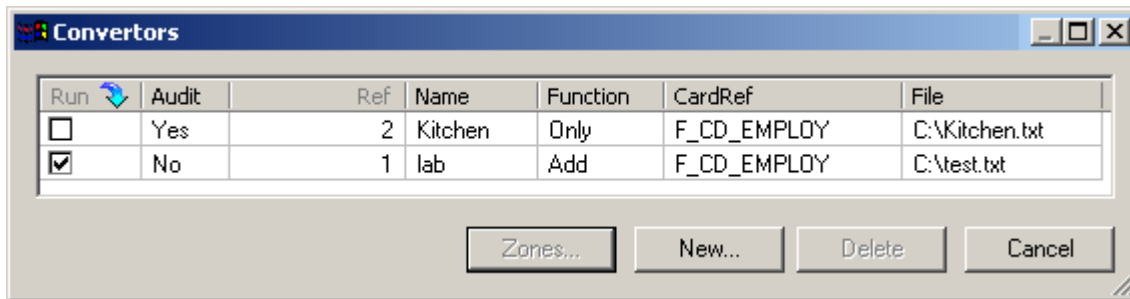
**Menu Access** sets what menus users have access to.



Users are selected and the menus that are allowed are moved to the CAN USE block by selecting the menus in the CAN NOT USE block and clicking on the right arrow. Similarly, items are moved from right to left to disallow access.

**Converter types** allow the editing of the description of the converter types. The data can be sorted by clicking on the column names.

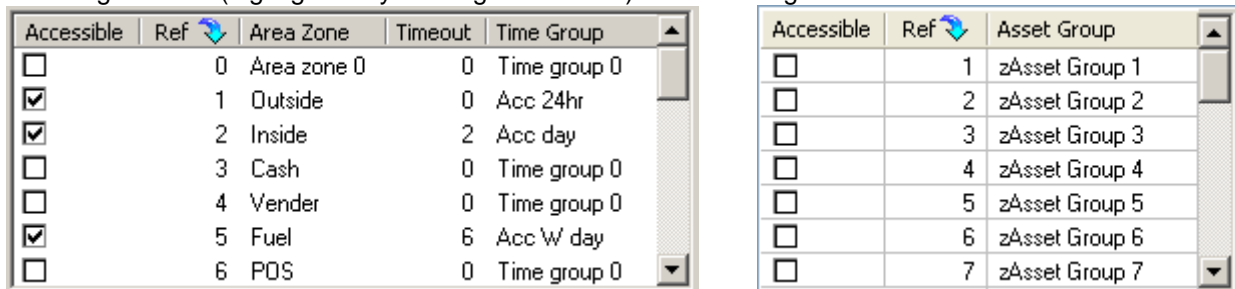
**Converters** set conversion tasks. Tasks that are checked to run are executed when **Start** is selected. **Audit** sets that the changes are logged to the daily audit file. **Ref** is the task reference number. A descriptive **Name** identifies the task. The **Function** of the converter is selected from a list of types as described above. **CardRef** selects the field name (e.g. F\_CD\_EMPLOY or F\_CD\_CARDNUM) that is used to find the data in the database, as referenced to in the text file. **File** sets the text file that contains the cards that are converted. The task data can be sorted by clicking on the column name to be sorted by.



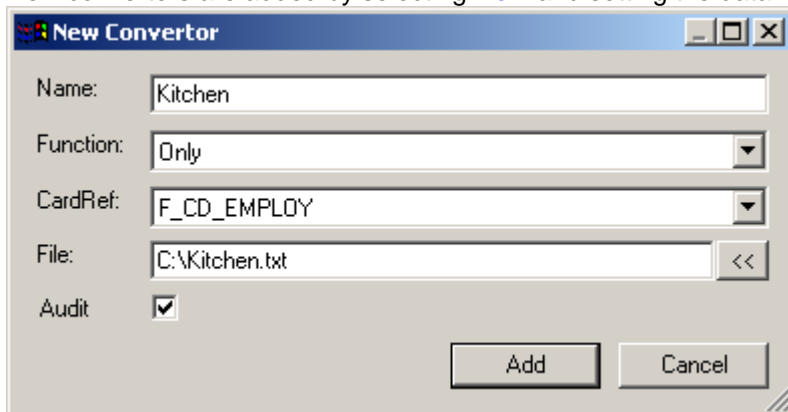
**Data** to be added or deleted (password permitting per zone / item) are selected by clicking on the zone / item accessible and for zones - editing the time-out and selecting the time group by selecting the group from the list (clicking on the time group).

Columns can be stretched by dragging the column name border. The area zones can be ordered ascending or descending by clicking on the column name by which the sorting must be done.

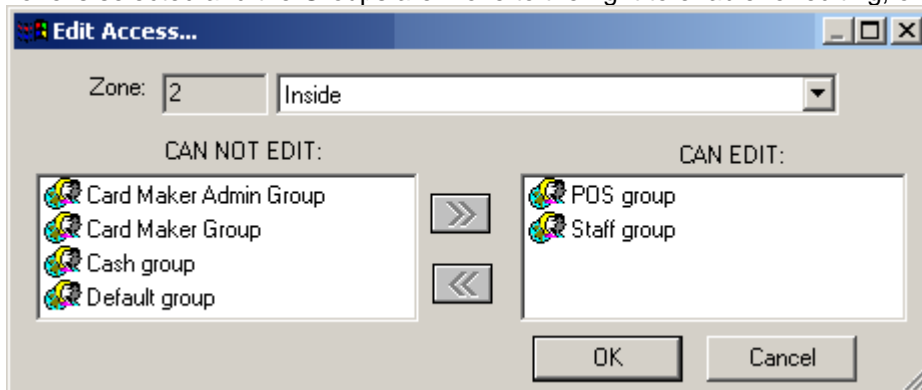
**Add / Save** stores the changes and **Cancel** closes the window without saving. Existing converters are Deleted by selecting the task (highlighted by clicking on the task) and selecting **Delete**.



New converters are added by selecting **New** and setting the data in the **New Converter** box.



Right clicking on the zone setting menu, gives access to administrators to set the zones that users can select. The zone is selected and the Groups are move to the right to enable for editing, or from right to left when not editable.



**Compact Databases.** The **Card Data** and **AreaZoneGroup** databases are compressed. This requires that all programs that have the databases open be closed (all SoftWin3 programs including SCS\_Server).

The **New References** option cleans up the database AreaZoneGroup, renumbering the field Reference, making editing more efficient. This field is only used when editing and has no effect on the functioning on the area group.

# HELP

Access to this file is by selection of the help option or selecting F1. Topic help is currently only via the help menu.

## Topic

### ? About

Displays general information on the program, with parameters available when starting the program.

