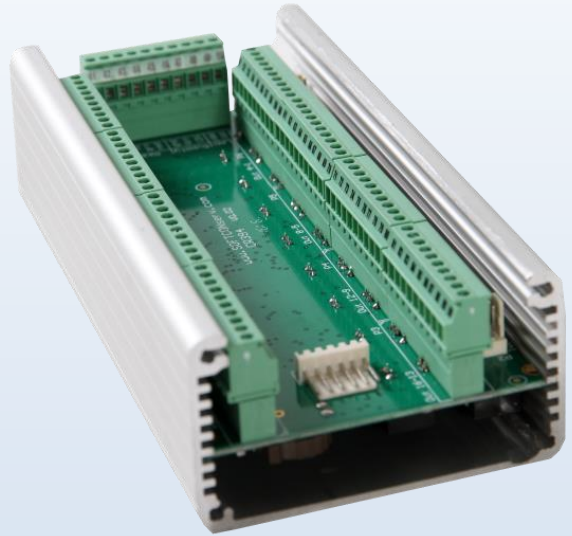


# CR394

## I/O Controller – Expander

Controller can function as an I/O Expander to controllers with a RS485 communication port or function stand-alone



### System functions

- Stand-alone or system integrated controller
- Expander to controllers
- Token- Card- Finger reader to output control
- Inputs (contacts, temperature, etc.) to output control
- Real Time Clock, time-out and counting control

### Reader and input/output capabilities

- 1 Card reader - Data/clock, Wiegand. 2 LEDs
- 16 configurable relay outputs (Normally open, 3A)
- 32 inputs - tranzorb protection
- Expansion modules (1-wire)

### Communication options

- RS485, 9k6 or 19k2 baud
- Reader Wiegand or Data/clock

### Diagnostic and programming tools

- Software watchdog and power dip reset
- 1 diagnostic LEDs display
- Configuration via RS485 LAN
- Configuration via hand programmer (RS485)

### Housing and dimensions

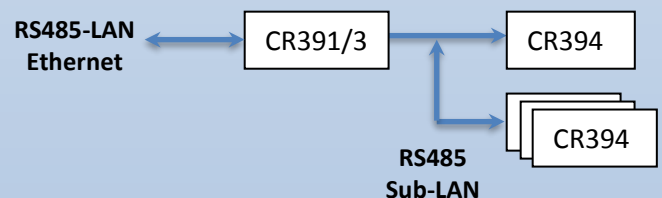
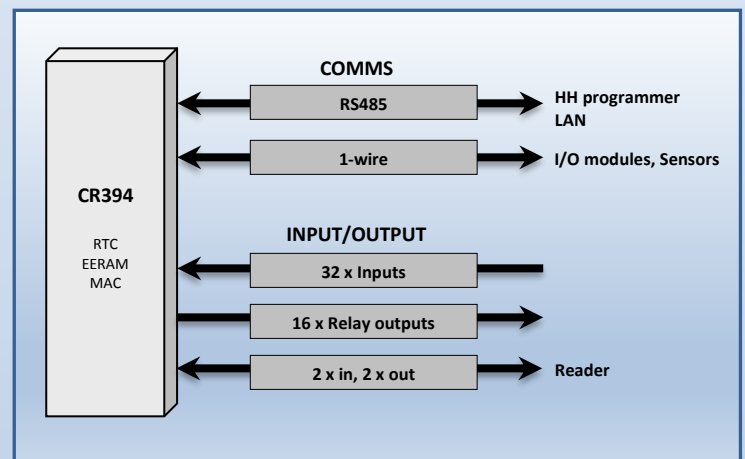
- Housing to requirements
- Aluminium enclosure 165mm x 77mm x 45mm

### Power supply and consumption

- 12 VDC power source
- Relay contact 30VDC / 220VAC, 3A

### Environmental conditions

- Storage Temperature: -20 to 65 Degrees C
- Operational Temperature: 0 to 45 Degrees C



### Applications

- Lift control
- Internet-Of-Things I/O expansion
- Vending I/O
- Locker control



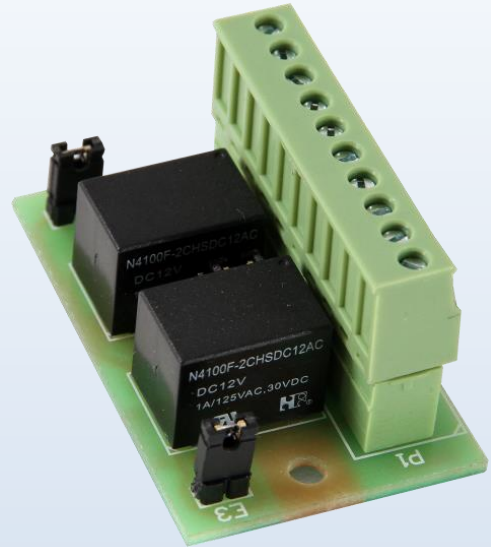
SOFTWARE CONTROL SERVICES (PTY) LTD

475 King's Highway  
Lynnwood  
Pretoria, South Africa  
[sales@softconserv.com](mailto:sales@softconserv.com)  
t: +27 12 3487301

26B Woodbridge Bpark  
Koeberg Rd  
Milnerton, Cape Town  
[softcape@mweb.co.za](mailto:softcape@mweb.co.za)  
t: +27 21 551 5728

# IO392

## Dual Relay expander / Interface



### Communication options

- 1-wire serial multi-drop bus (100m length)
- Open collector
- 5 to 12V

### Housing and dimensions

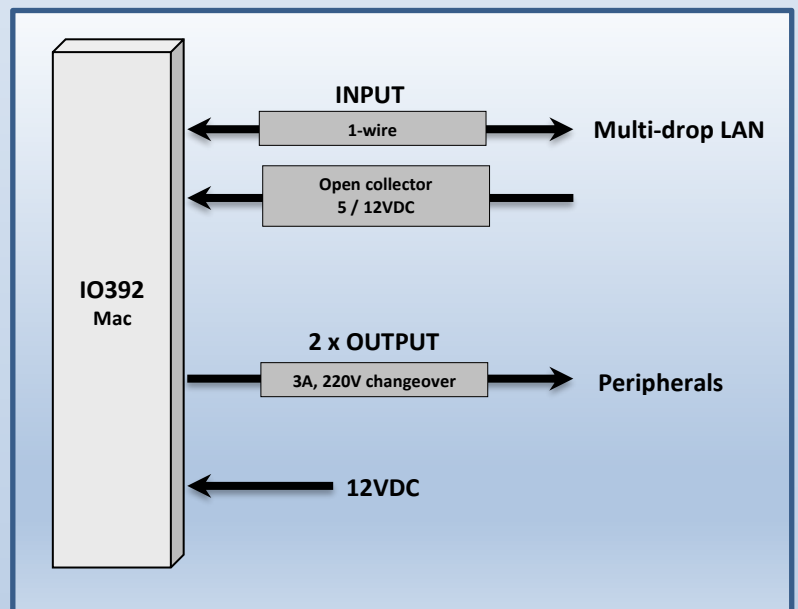
- Housing to requirements
- PCB 47.8mm x 30.5mm x 15mm

### Power supply and consumption

- 12 VDC 50mA supply
- Relay contact 30VDC / 220VAC, 3A

### Environmental conditions

- Storage Temperature: -20 to 65 Degrees C
- Operational Temperature: 0 to 45 Degrees C
- Humidity: 80% non-condensing



SOFTWARE CONTROL SERVICES (PTY) LTD

475 King's Highway  
Lynnwood  
Pretoria, South Africa  
[sales@softconserv.com](mailto:sales@softconserv.com)  
t: +27 12 3487301

26B Woodbridge Bpark  
Koeberg Rd  
Milnerton, Cape Town  
[softcape@mweb.co.za](mailto:softcape@mweb.co.za)  
t: +27 21 551 5728