



SOFTWARE CONTROL SERVICES (PTY) LTD

475 King's Highway, Lynnwood
P.O.Box 36675, Menlo Park
Pretoria, South Africa
0102

(t) +27 12 348 7301
(f) +27 12 348 1129
(e) techsupport@softconserv.com
www.softconserv.com

SCS_Bootloader.

Version 0. 1

Prepared by:

Softcon Software Control Services (Pty) Ltd.

15 August 2016



Revision History

Name	Date	Reason For Changes	Version
	15-Aug-16	Initial document	0.1

Contents

1. General.....	3
What's needed:	3
2. Setup	3

1. General

Since the beginning to upgrade the controllers have been a problematic exercise. You had to go to each and every controller, either swap out EPROMS or upgrade the controllers with an MPLAB tool.

Now with the new software you will be able to upgrade the CR-391 (TCP/IP or RS485) controllers from the server machine or the client machine with the new application called SCS_Bootloader.

What's needed:

1. CR391 controller that has a firmware version SCS_CR391P_00K.01V or higher.
2. TCP/IP or RS-485 connection to the CR-391.
3. SW version Softwin3_1_04_15 or Higher.
4. No other hardware/ Software required.

2. Setup

- a. Setup controller/reader as per normal.
- b. When the controller indicates online you can click on Programs and select SCS_Bootloader (See Figure 1.1).

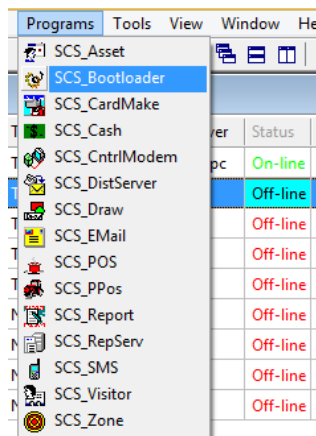


Figure 1.1

- c. In the bootloader application, click on setup and then Bootloader quick setup (See Figure 1.2).

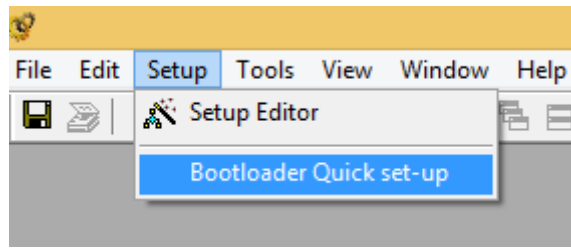


Figure 1.2

- d. In bootloader Quick set-up is where the firmware file is selected, time and date scheduled and the controllers selected that needs to be upgraded (See Figure 1.3).
- e. HEX-File: Browse to the applicable firmware by clicking on the browse button.
- f. Scheduled Time: Here select the date and time when the schedule needs to run.
- g. PC- Executor: select the computer that will execute the command.
- h. Controllers: Select the controllers under available and move the controllers to the scheduled box.

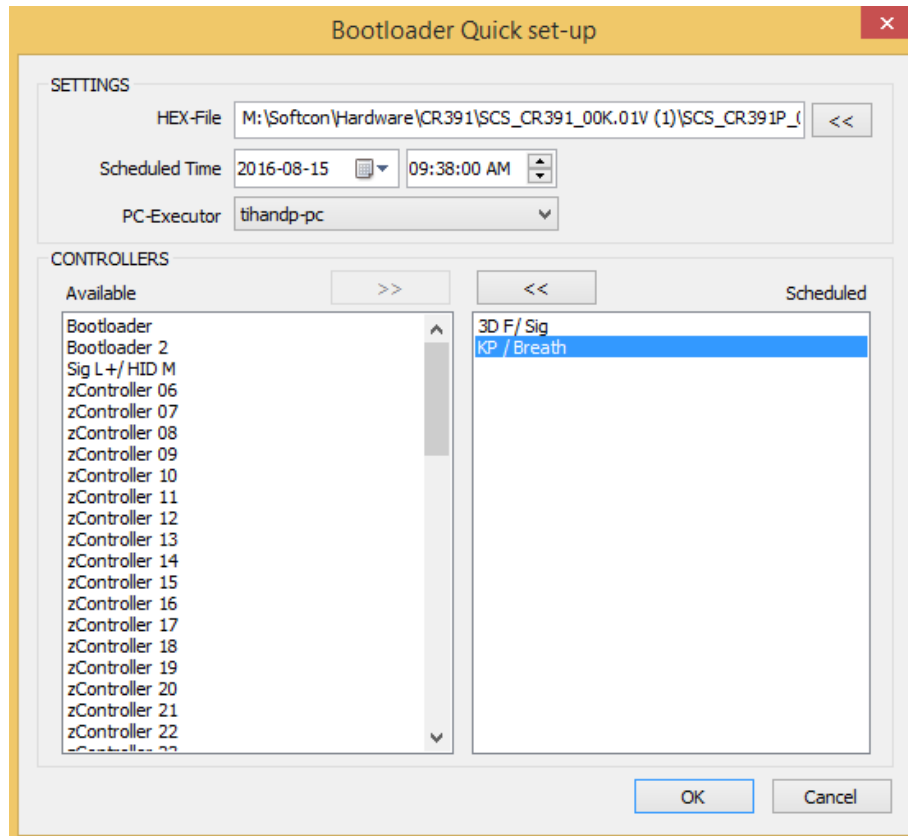


Figure 1.3

- i. After clicking on the OK button, click on tools and then Bootloader Messages (Figure 1.4).

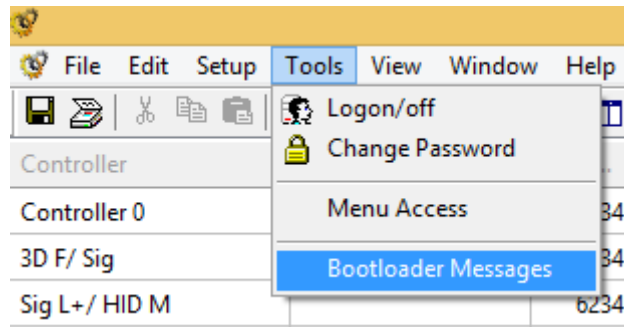


Figure 1.4

- j. In the Bootloader Messages screen you will now see all the bootloader messages on this activity screen (Figure 1.5).

User: administrator - [Bootloader Set-up]								
Controller	PC Executer	UDP ...	Tries	File	Operation Date	Status	Last Done	BL Version
Controller 0		6234	3					
3D F/ Sig	Localhost	6234	3	M:\Softcon\Hard...	2016-08-15 09:38:0...	Started		Version: 67.82
Sig L+ / HID M		6234	3					
KP / Breath	Localhost	6234	3	M:\Softcon\Hard...	2016-08-15 09:38:0...	No Response from device	2016-08-15 09:38:1...	
Bootloader	Localhost	6234	3	C:\Users\Tihan\D...	2016-05-24 10:46:0...	No Response from device	2016-05-24 10:46:2...	
Bootloader 2	Localhost	6234	3	C:\Users\Tihan\D...	2016-05-26 11:45:0...	Success	2016-05-26 11:46:2...	Version: 67.82
zController 06		6234	3					

Figure 1.5