



SW3 dB Size How2

Revision 003

7 June 2021

Revision History

Version	Date	Person	Reason For Changes
001	2010-7-10	MDH	Initial
002	2021-5-27	MTL	Reformat
003	2021-6-07	MTL	Add duplicates

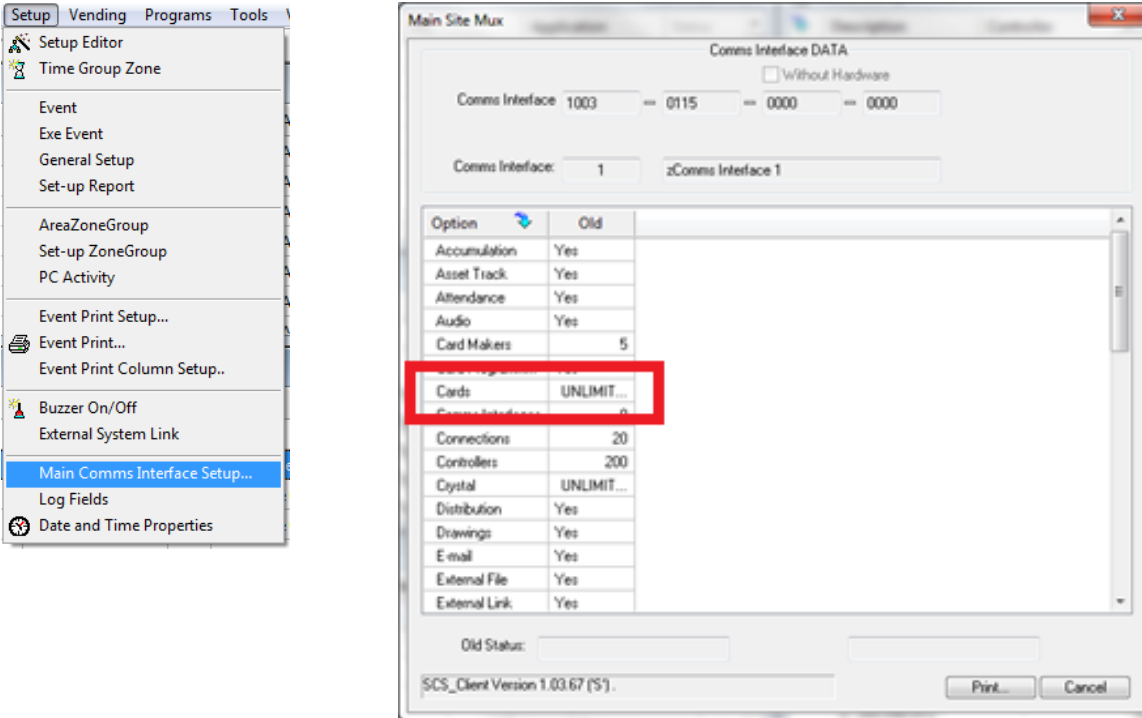
CONTENTS

1	GENERAL	3
2	DB ADD RECORD	3
3	DB INCREASE RECORDS	4
4	DUPLICATES	4

1 GENERAL

The default size for the User database is 1000 users.

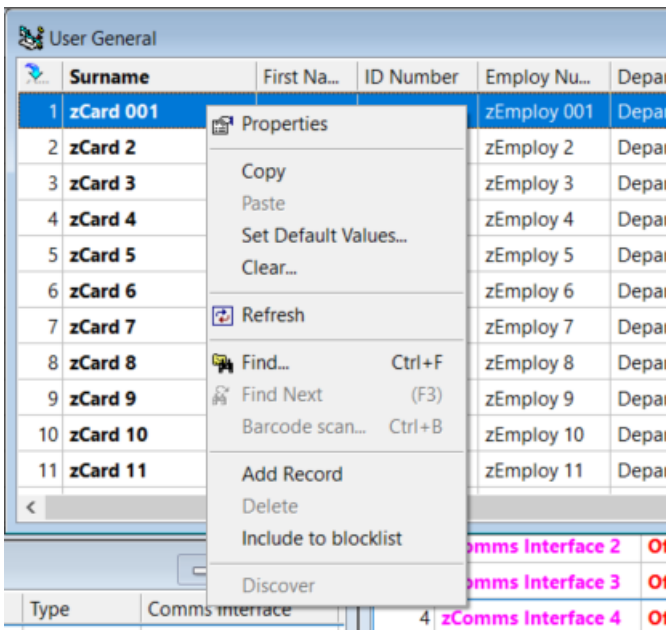
The maximum size is limited by the site license keys as seen in SCS_CLIENT menu Setup/Mains Comms Interface:



To Increase this limit, please contact Softcon with the Comms Interface number on the top of this display. The SW version at the bottom is also required.

2 DB ADD RECORD

In any of the User (Card) list displays, right click on any line (not the header) and select Add Record – this adds one record.



3 DB INCREASE RECORDS

The number of records in the user (card) table is set in the MS Access database c:\softwin3\config\ database.mdb.

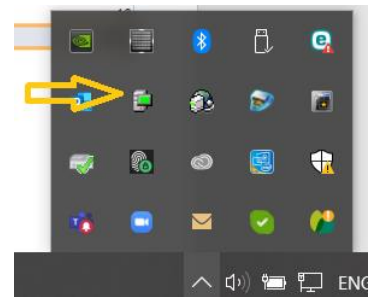
Open this database with a MS Access or use the tool provided c:\Softwin3\dbedit\SCS_DBEdit.exe. The table TABLES sets the Source, Name and RECORDS (number of users).

Simply change the number of records for DBT_CD as required and save.

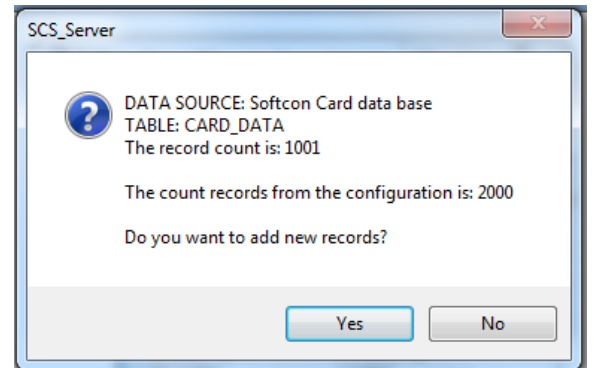
ID	SOURCE	NAME	RECORDS
DBT_BADGE_SEQ_TYPES	3	BADGE_SEQ_TYPES	4
DBT_BAR_CODE	1	BAR_CODE	6
DBT_BC_TYPE	5	BCODE_TYPE	6
DBT_BUILDING	1	BUILDING	11
DBT_BUTTONS	1	BUTTONS	20
DBT_BUTTONS_TYPE	5	BUTTONS_TYPE	10
DBT_CAM	1	CAMERA_STATUS	20
DBT_CAM_SNAP	5	CAMERA_SNAP	3
DBT_CAM_TYPE	5	CAMERA_TYPE	2
DBT_CAMPUS	1	CAMPUS	6
DBT_CAMVIEW_FILTERS	16	FILTERS	5
DBT_CAMVIEW_NEW	16	NEW_PROJECTS	1
DBT_CAMVIEW_PRINT	5	CAM_VIEW_PRINT	3
DBT_CAMVIEW_TYPE	5	CAM_VIEW_TYPES	12
DBT_CAMVIEW_VIEW	16	VIEW_PROJECTS	5
DBT_CARDPRINT_REASO	1	CARDPRINT_REASON	10
DBT_CD	3	CARD_DATA	1000

Close all SCS programs, including SCS_SERVER. Note that SCS_SERVER runs in the background (hidden).

Select the SCS_Server icon and Log on and stop, then close.



Restart SCS_Server (or SCS_START) and select **Yes** to add the records



4 DUPLICATES

When adding records, the default data set is as defined for every field. Fields such as Card Number is set for no duplicates. Should the record to be added cause a duplicate, records are not added.

Either delete the duplicate or simply edit the default data in c:\softwin3\config\database.mdb, table FIELDS. Open this database with a MS Access or use the tool provided c:\Softwin3\dbedit\SCS_DBEdit.exe. Change the DEFAULT to **--F_CD_REF**, resulting in negative record number used as Card Number. Note that 0 or null (blank) will result in a duplicate.

Pin may also be set to be unique (as in later version) – in older versions this was blank. These blanks will have to be removed. Change F_CD_PIN default to **--F_CD_REF** and delete the PIN field in the card database.

ID	REFERENCE_ID	TABLE_ID	NAME	TYPE	SIZE	DEFAULT	INDE
F_CD_NUM		DBT_CD	CARD_NUM	NUMBER		--F_CD_REF	2 U
F_CD_NUM2		DBT_CD	CARD_NUM2	NUMBER		--F_CD_REF	2 U
F_CD_OLD_CARD		DBT_CD	OLD_CARD	NUMBER		0	0 U