



SW3 Backup How2

Revision 003

24 October 2021

Revision History

Version	Date	Person	Reason For Changes
001	2011-9-01	MDH	Initial
002	2021-10-14	MTL	Redo
003	2021-10-24	EMB	Add SQL backup

CONTENTS

1	AIM	3
2	GENERAL	3
3	BATCH FILES	3
	3.1 BACKUP_C.BAT	3
	3.2 BACKUP.BAT	3
	3.3 BACKUPSQL_C.BAT AND BACKUPSQL_USB.BAT	4
	3.4 BACKUP PROCEDURE	4
4	BACKUP EVENTS	5
	4.1 EXE EVENT	5
	4.2 TIMED EVENT	5

1 AIM

The aim and goal of this .PDF document is to serve as addition help manual for the use of the Softcon program SoftWin 3 (SW3).

This document describes simple methods for backup of:

- Setup
- Users (card)
- Log, Accumulation and Audit
- Configuration (of database settings and edit / display)

The first three types above are MSAccess.mdb files or SQL.

Generally when using SQL, SQL tools are used to do backup.

The Configuration files are MSAccess.

2 GENERAL

BATCH FILES (.BAT)

The backup is by running batch (.bat) files provided with SoftWin3 in c:\softwin3

- Backup.bat Backup to USB drive
- Backup_c.bat Backup to local C drive
- BackupSql.bat Backup to local C drive

These files must be edited as required.

Backup is by simply by executing the batch file (Dclick on the .bat file).

AUTO BACKUP EVENTS

SW3 has built-in functions to execute (run) a .bat file, triggered by an event (**EXE Event**).

SW3 has built-in timer functions to generate events on certain time of day (**Timers**).

To automatically generate periodic backup is by setting-up a timer to generate an event that triggers the execute of the .bat file.

3 BATCH FILES

The initial versions of the provided batch files used PKZIP to compress the backup files.

As this are no longer freely redistributable application, batch files provided use 7-Zip to compress the backup files.

7-Zip is provided with the installation. If PKZIP is preferred, edit the batch file.

3.1 BACKUP_C.BAT

The following is done:

- creates the directory C:\softwin3\backup it not existing.
- sets of backups are kept (file.3, file.2, file.1 and file.zip), where file.3 is the oldest and file.zip the file created now (file.2 replaces file.3, file.1 replaces file.2 and the previous file.zip replaces file.1).
- the files are:

Database	(c:\softwin3\database*.mdb)	Setup and users databases
Config	(c:\softwin3\config*.mdb)	Database and edit configuration
Report	(c:\softwin3\database*.rpt)	Crystal report files
Batch	(c:\softwin3*.bat)	Batch files (e.g. all the backup.bat)

To do backup on other drives (this should be done to prevent loss of C: drive also is loss of backup), edit or create a new .bat and change C as required, or add to copy the backup directory to another drive.

3.2 BACKUP.BAT

The following is done:

- Requests the drive to backup to (e.g. a USB drive).
- Does the same as Backup_c as above (to C:\softwin3\backup)
- These files are also copied to the entered backup drive, in a directory set in the batch file.
As shipped, this directory is named: your-site-name-goes-here.
EDIT THIS WITH AN APPROPRIATE NAME (e.g. DOJ_Kimberly), else it will override another backup with this name.
- A backup of the daily event log (LG) and daily audit (AU) files are done to month compressed files with name LGYMM and AUYYMM (the day files into a compressed month file). The number of months is set to 3 (alter if required).

3.3 BACKUPSQL_C.BAT AND BACKUPSQL_USB.BAT

The following is done:

- Does what Backup.bat does (to C:\softwin3\backup or to a requested drive), with the difference:
- BackupSQL_c.bat will make backups on the local drive in c:\Softwin3\backup.
- Use BackupSQL_c.bat for automatic timed backups.
- BackupSQL_USB.bat will make backup on external drive or memory stick.
- Creates SQL .Bak files of:
 - DB_SOFTCON_DATA
 - DB_SOFTCON_AUDIT
 - DB_SOFTCON_ACCUME
 - DB_SOFTCON_LOGGING
- As the other batch files, Creates compressed files of:

Config	(c:\softwin3\config*.mdb)	Database and edit configuration
Report	(c:\softwin3\database*.rpt)	Crystal report files
Batch	(c:\softwin3*.bat)	Batch files (e.g. all the backup.bat)

Requirements

- In SQL server Management studio must be installed.
- **SQLCMD.exe** must be installed for your SQL Server
- Ensure that the Windows user have full rights to make changes.
- TCP/IP must be enabled for SQL
- Ports 1433 and 1434 must be allowed through windows firewall

BackupSQL_c.bat.

- When file run for first time it will ask for SQL instance name.
- Instance name will automatically be saved in Widows Registry and automatically retrieved when required.
- SQL authentication is automatically set with Softcon Username and Password
- To remove instance name, run removeinstance.bat

BackupSQL_USB.bat.

- Every time when file run it will ask for drive letter, site name, instance name, username and password
- Provided information will not be stored.

3.4 BACKUP PROCEDURE

THE FOLLOWING IS SUGGESTED (when visiting a site)

- Check that the "site-name-goes-here" has been corrected on the site PC .bat file.
- Do a backup to USB (this will be the "before I arrived").
- After making changes, do another backup to USB (this will be the "when I left").
"when I left" is the .zip files, "when I arrived" will be the .1 files.
- Back at the office, copy these site files to a secure folder (the USB drive will eventually break or be mislaid).
Before going to the site again, copy these back to a USB drive that will be taken along (hence your last backup is with you).

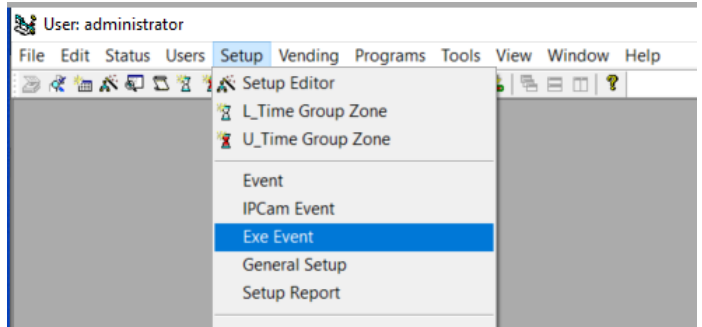
4 BACKUP EVENTS

To automate a periodic backup, the following must be set in SoftWin3.

The default ship has a timed event that triggers an exe event that executes backup_c.bat. The PC that must do the exe event is set to none. **THIS MUST BE CHANGED.**

4.1 EXE EVENT

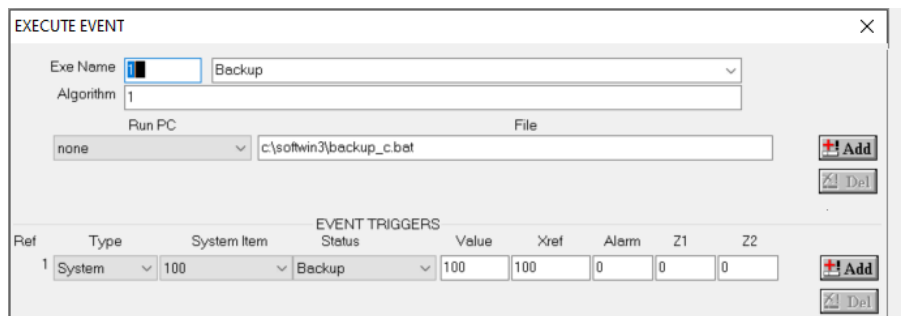
A Backup exe event is set with the shipped SW3. If not exit create as shown.



The **Run PC must be set** (e.g. localhost, PCxyz)

This selects which PC in the system must execute the batch file set. Edit the file name and add more files to execute if required.

Note the event that triggers the exe event could be set to any or multiple events that happens – e.g. when the front door is opened, when John enters the site.



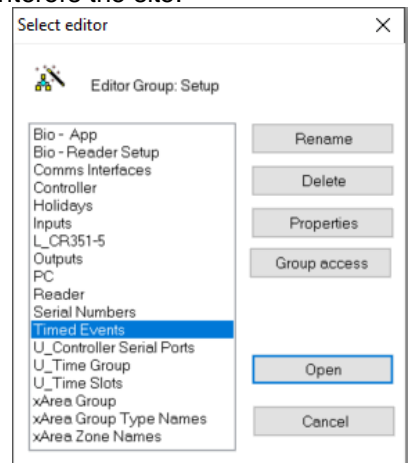
4.2 TIMED EVENT

A timed event is set with the shipped SW3.

If the Timed Events option is not visible in Setup/Setup editor, make the menu selection visible (newer version via Group access).

A PC must be set to do the event. The repeat is the period when to generate the event: yyyy-mm-dd hh:mm. As shown dd = 01, hence once a day.

The Next field shows when it will be done next (this is changed when the event occurs). To set that the event must be done at a specific time (e.g. at 23:00), change the Next time as required. If this field is not editable, change to editable (right-click on any column header, say on Next) and click on the eye icon to change it to a pencil).



The skipped field can be set to do misses events (e.g. the PC was off when a backup should have been done)

Ref	Description	Last Done	Next	PC	End	Repeat	Skipped	Type	Sys	Val...	STAT	Xref	Alarm
1	Backup	2021/10/15 16:25:14	2021/10/16 13:25:00	localhost		0000-00-01 00:00	Not do any ...	System	100	100	Backup	100	Unknown
2	zTimed EV 2			none		yyyy-mm-dd hh:mm	Not do any ...	all	0	0	all	0	Unknown
3	zTimed EV 3			none		yyy-mm-dd hh:mm	Not do any ...	all	0	0	all	0	Unknown