

SW3 Security

Help Version - 1.01.48

2005-05-23

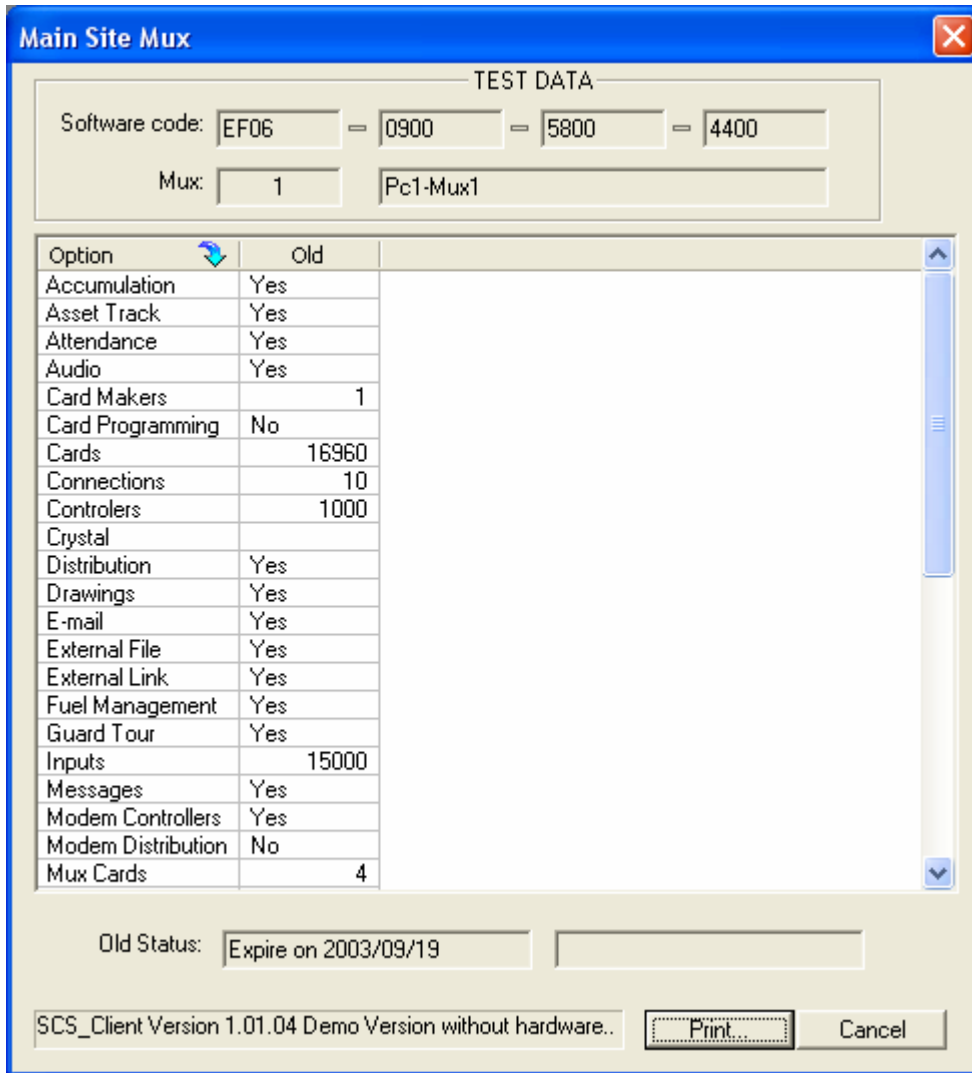
Not all functions are available or are limited in Softcon versions. These are generally indicated in SW document in purple as: **Limited option** - see [SECURITY](#) settings.

1 SECURITY KEYS

Security keys that are stored in the **mux** card **protect** the SW. The SW as supplied contains all functions, but these are enabled according to the keys. To enable or change the options, keys obtained from Softcon are entered. Note that the keys provided are generated according to unique numbers read from the mux card, i.e. **keys are generated for specific mux cards** and will not work on any other card.

WARNING: should wrong keys be entered more than 5 times, all mux setting are cleared and all functions are disabled. A total new set of keys must be obtained from Softcon.

The mux card that contains the SW key information is set in the Set-up/Set-up editor/[Mux Set-up menu](#). The PC in which the server program runs (**ID to server**) is set for the mux card that contains the SW keys. When the server runs and this key mux card is not available, all functions are **blocked**. Access to the Mux set-up, Main site Mux and test options only is available. The options available can be seen in the set-up/[Main Mux menu](#).



When connected to the main mux, the menu displays the unique number of the mux card. This number is used by Softcon to generate the SW keys required to enable the SW functions. The main mux reference and mux name are displayed (the mux card containing the keys, as set in server ID). The options available and the current (old) settings are displayed. New options are entered together with a key provided by Softcon. When in the demo version without HW, the SW code is displayed (see below), the mux reference displays -1 and the set options are displayed in the old columns. The options are (please contact your installer or Softcon on prices to change settings). The included column indicates which SW packages (may require additional controller HW) contain the option as standard, with AS380 (mini), AS381 (lite), AS382 (standard), AS383 (super), AS388 (free) and cardmaker, indicated with 0, 1, 2, 3, 8, C.

| FUNCTION | DESCRIPTION | SW |
|------------------------------|--|----------------------------------|
| Accumulation | Enables the accumulation of time attendance calculation of cardholders. | 1, 2, 3 |
| Asset Track | A future option of linking asset tags to cardholders and manages assets. | None |
| Attendance | A future option of time and attendance functions. | None |
| Audio | Enables the playing of audio files on the occurrences of set events. | 2, 3 |
| Card Makers | The number of card maker programs that can run (requires a connection setting and network enabled if SCS_Server is not on the same PC). 0 disables Card Maker. | C |
| Card program | Enables card to be programmed via the card maker or via a card edit menu. | 3 |
| Cards (x100) | The number multiplied by 100 of access cards in the system. | 8=1, 0=10, 1=20, 2=50, 3=n, C=50 |
| Connections | The number of programs that can connect to the SCS_Server (on the same or different PCs). Should a program no be on the same PC, the network option must be enabled. | 8=1, 0=2, 1=4, 2=8, 3=16 |
| Controllers | The number of controllers connected to in the system. | 8=2, 0=5, 1=12, 2=60, 3=200 |
| Crystal | Yes enables additional special reports. | 8=5, 0=30, 1=60, 2=100, 3=n |
| Distribution | Yes enables the synchronization of databases using the distribution server. Also requires network or Modem distribution setting. | None |
| Drawings | Enables SCS_Drawing that displays events and allows operator control graphically. Requires the | 1, 2, 3 |

| | | |
|----------------------|---|-------------------------------|
| | connection option. | |
| ⌘ E-mail | Enables the automatic email of events and reports (future option). | 3 |
| ⌘ External File | Enables clock in and clock out data to be sent to data files. | None |
| ⌘ External Link | Enables the linking to external programs to get or send data and/or events. | None |
| ⌘ FP Access | Enables the fingerprint access control via TCP readers. | None (option to 1, 2, 3) |
| ⌘ FP Capture | Enables the fingerprint capture via TCP and USB readers. | None (option to 1, 2, 3) |
| ⌘ Fuel manage | Enables the fuel management functions. | None |
| ⌘ Guard Tour | A future option of patrolling guards control. | None |
| ⌘ Inputs | The number of inputs. | 8=32, 0=80, 1=240, 2=960, 3=n |
| ⌘ Messages | Enables messages to be displayed when set events occur. | None |
| ⌘ Modem Cntrls | Enables modem communication directly via dial-up modems. | None |
| ⌘ Modem Distr | Enables the synchronization of databases between systems via dial-up modems. Requires the distribution option. | None |
| ⌘ Mux Cards | The total number of mux cards in the system. | 0=1, 1=2, 2=4, 3=8, 8=1 |
| ⌘ Network | Enable programs to connect to SCS_Server via a PC network. | 2, 3 |
| ⌘ Occ. Log-Book | Enables the editing of a logbook when wet events occur. | 2, 3 |
| ⌘ Outputs | The number of outputs. | 8=10, 0=25, 1=60, 2=300, 3=n |
| ⌘ Parking Pay | Enables the pay on exit parking functions. | None |
| ⌘ Photo capture | Enables the capture of photos in card edit, card maker or visitor capture menus. | C, 2, 3 |
| ⌘ Photo display | Enables card photos to be displayed in drawing, card maker or card edit menus or in visitor capture. | C, 2, 3 |
| ⌘ POS | The number of Point Of Sale programs (requires a connection setting and network enabled if SCS_Server is not on the same PC). 0 disables POS. | None |
| ⌘ PPOS | The number of pay on entry Parking Point Of Sale programs (requires a connection setting and network enabled if SCS_Server is not on the same PC). 0 disables PPOS. | None |
| ⌘ Random search | Enables random search functions. | 2, 3 |
| ⌘ Readers | The number of readers in the system. | 8=4, 0=10, 1=24, 2=120, 3=n |
| ⌘ SMS | Enables the sending of SMS messages on events. | None |
| ⌘ SWin3 Version | The maximum version number that updates are enabled for. Versions after the set maximum may have options that are disabled. | All |
| ⌘ Transl. AZG | Enables the area zone group converter to run. Requires the connections option. | 2, 3 |
| ⌘ Transl. Spec | Enables special converters to run (other than AZG converter). Requires the connections option. | 3 |
| ⌘ Vending | Enables the vending functions. | 3 |
| ⌘ Video control | A future option of camera and video control. | None |
| ⌘ Visitor Capture | The number of Visitor capture programs (requires a connection setting and network enabled if SCS_Server is not on the same PC). Excludes photo capture. Includes print. | 2=1, 3=4 |
| ⌘ Vis. Pre-registr | Enables the future visitor pre-register option. | None |
| ⌘ Visitor/host cntrl | Enables cards to be linked to host cards (follow me). | 2, 3 |
| ⌘ WWW | A future option allowing the system to be access via the WWW. | None |

A demo version is available that requires no mux card (also for lap top computers) and is enabled by selecting the ⌘ **Demo Version** in the Tools/Test options menu. The Main Site Mux display shows the ⌘ **Software Code** that is generated by the SW according to PC HW profiles. This code is used by Softcon to generate the ⌘ **Test Key** that enables the Demo version, **without HW**. These codes are **PC dependant**.

An expiry date is displayed, after which the SW is automatically blocked and new test keys must be obtained from Softcon. The default is 90 days.

SW versions are available with limited functions. Please contact Softcon at www.softconserv.com.

Key may be issued that have an **expiry**, i.e. functions are only enabled for a set period. Generally new systems have a set expiry period that start running when the SW is used for the first time, requiring the SW to be **registered** with Softcon before the expiry is disabled. The expiry date is displayed at the bottom of the Main Mux menu. If an expiry is pending, a warning message is displayed at 12:00 every day.

The print key prints the site configuration to the default printer.

Should the mux card be removed from a PC for which the keys were entered, the options remain available for a period of two weeks (no communication possible with controllers). Thereafter the demo version must be used.

